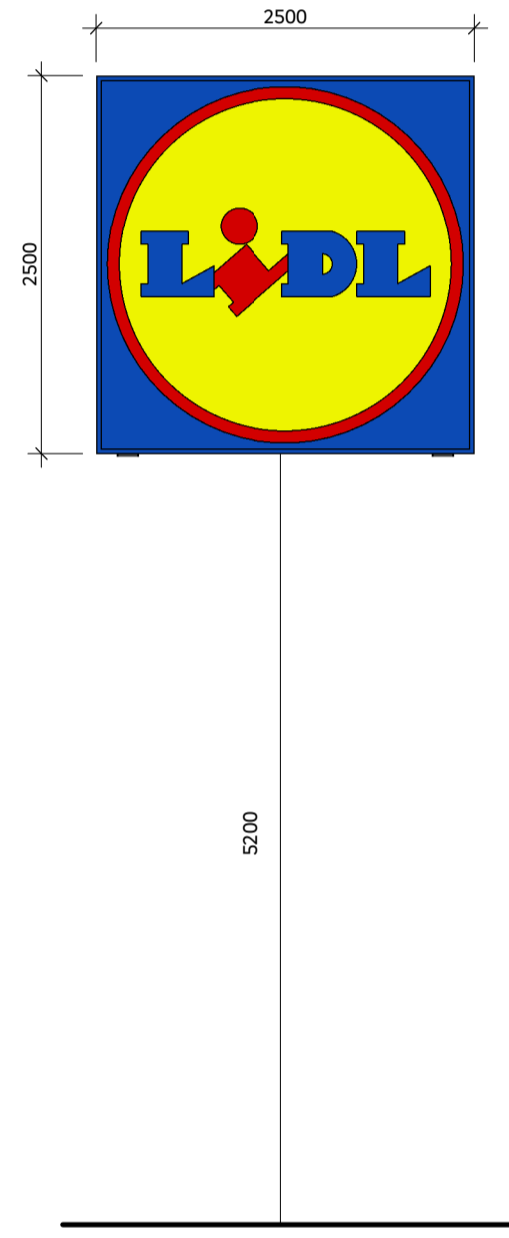


Signage Plan  
1 : 500



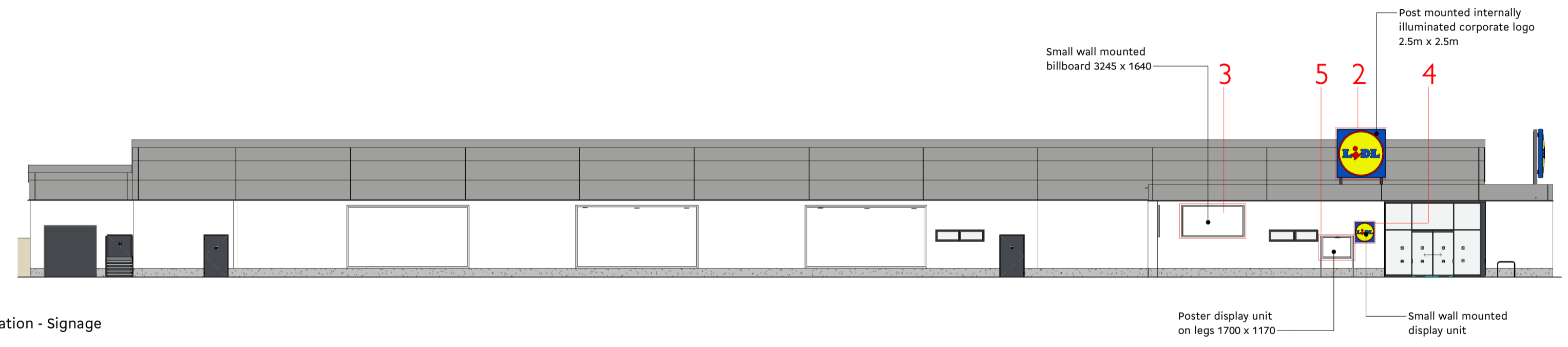
- 1 Flagpole Signage**  
1 : 50
- 2.1m x 5.98m Flagpole Signage
  - Aluminium Panels lacquered in RAL 9006 white
  - Aluminium base lacquered in RAL 7024 graphite grey
  - Lidl Logo as lighting box with a thermoformed, curved and extensive printed acrylic logo shell
  - Lettered panels are squared milled with foiled acrylic glass deposited.
  - Galvanised Steel frame construction
  - Concrete base to Structural Engineers design
- Illuminated by SAPS-LEDs  
• Luminance yellow undimmed: Approx 440CD/M<sup>2</sup>



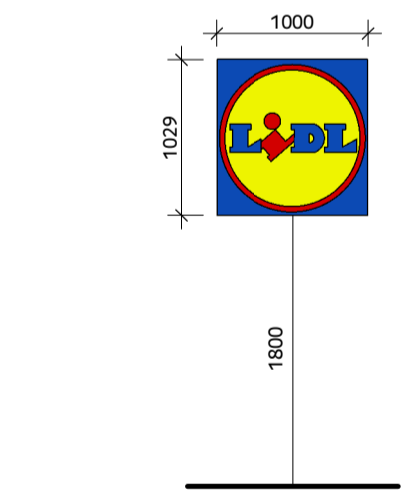
- 2 Canopy Signage**  
1 : 50
- 2.5m Square, aluminium single sided lightbox.
  - Aluminium dual case type extrusion.
  - Comprising 4 mitred sections with welded inner steel frame.
  - Internally illuminated with white fluorescent tubes.
  - Facing panel - 5mm opal acrylic 40% light transmission decorated with Lidl logo graphic.



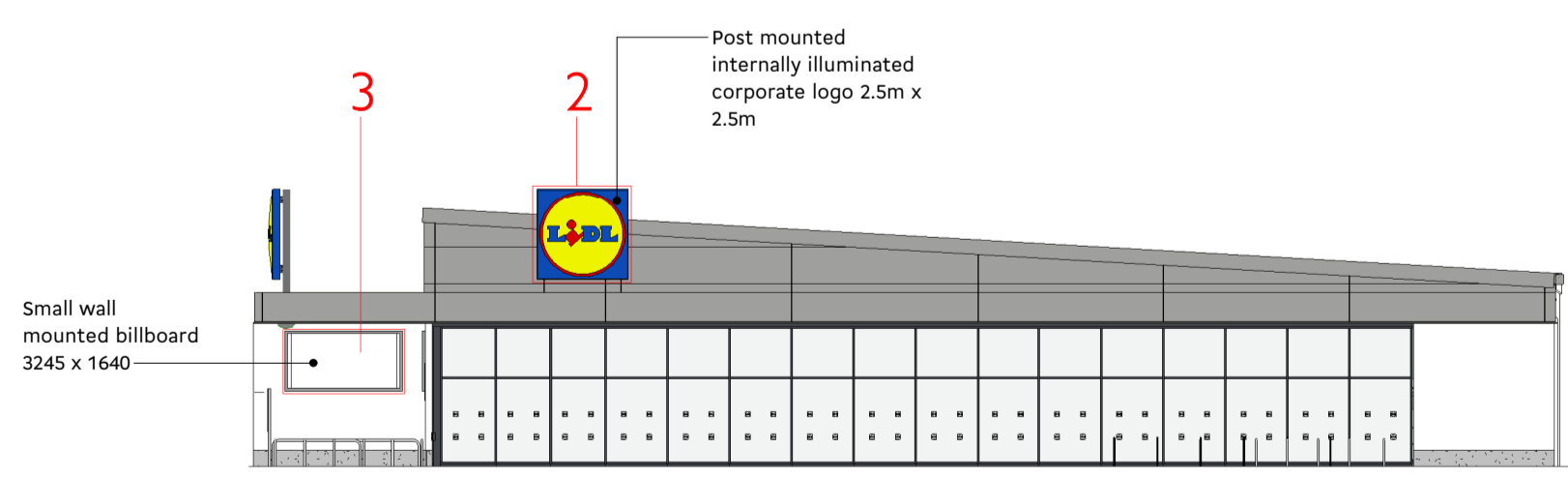
- 3 Small Billboard**  
1 : 50
- 3.245m x 1.64m wall mounted billboard.
  - White Aluminium RAL 9006



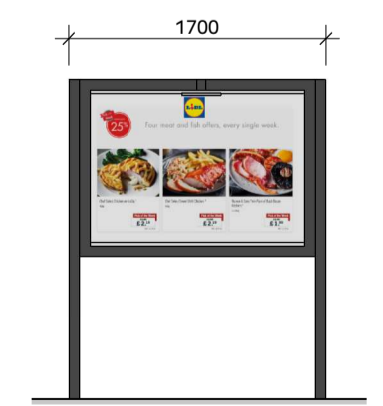
South Elevation - Signage  
1 : 200



- 4 Small Wall Mounted Signage**  
1 : 50
- 1m x 1.029m
  - Internally illuminated with white fluorescent tubes.
  - Facing panel - 5mm opal acrylic 40% light transmission decorated with Lidl logo graphic.



East Elevation - Signage  
1 : 200



- 5 PDU**  
1 : 50
- 1.7m x 2.12m Poster Display Unit.
  - Adonised Aluminium
  - Integrated Lighting



Spaceworks  
Benton Park Road  
Newcastle upon Tyne  
NE7 7LX  
T: +44 (0)844 800 6660  
www.spacearchitects.co.uk

Project Lidl - Ingleby Barwick				
Drawing Title Proposed Site Signage				
Project No. 07381	Drawing No. 00-XX-DR-A-99-0001	Suitability S3	Revision P8	Scale at A1 As indicated
File Reference: 07381-SPACE-00-XX-DR-A-99-0001-S3-P8				